



REGIO

Cultural Heritage
Management
Consultancy



Table of Contents

1	ABOUT US.....	1
2	OUR SERVICES.....	2
3	OUR REFERENCES.....	6
3.1	NABUCCO NABUCCO NATURAL GAS PIPELINE PROJECT, EAST SECTION. FIELD SURVEY FOR IDENTIFICATION OF ARCHAEOLOGICAL AND CULTURAL HERITAGE ASSETS.....	6
3.2	ZAFER REGIONAL AIRPORT CONSTRUCTION PROJECT, MONITORING, EVALUATION AND TRAINING SERVICES FOR ARCHAEOLOGICAL AND CULTURAL HERITAGE PROTECTION.....	7
3.3	YENİPAZAR MINING SITE. IDENTIFICATION OF AREAS CARRYING HIGH POTENTIAL OF CULTURAL AND ARCHAEOLOGICAL ASSETS	7
3.4	GEBZE- ORHANGAZI-İZMİR MOTORWAY PROJECT (INCLUDING İZMİR BAY CROSSING) CULTURAL HERITAGE SURVEYING AND DOCUMENTATION STUDIES.....	8
3.5	TEST PIT EXCAVATIONS FOR GEBZE-ORHANGAZI-İZMİR MOTORWAY PROJECT	8
3.6	SALVAGE EXCAVATIONS FOR GEBZE-ORHANGAZI-İZMİR MOTORWAY (INCLUDING İZMİR BAY CROSSING) PROJECT...9	9
3.7	IRAN – TURKEY – EUROPE (ITE) NATURAL GAS PIPELINE PROJECT. ARCHAEOLOGICAL FIELD SURVEY OF THE PIPELINE ROUTE	11
3.8	TRANS ANATOLIAN NATURAL GAS PIPELINE (TANAP) PROJECT SURVEY FOR ARCHAEOLOGICAL AND CULTURAL HERITAGE ASSETS.....	12
3.9	BAKU-TBLISI-CEYHAN PIPELINE RE-ROUTE SURVEY.....	13
3.10	FILYOS HARBOUR ARCHAEOLOGICAL SURVEY.....	14
3.11	YUMURTALIK FREE TRADE ZONE ARCHAEOLOGICAL SURVEY.....	14
3.12	NORTH MARMARA MOTORWAY (INCLUDING THE 3RD CROSSING OVER BOSPORUS) PROJECT OTOYOL	15
3.13	TEST PIT AND SALVAGE EXCAVATIONS FOR TRANS ANATOLIAN NATURAL GAS PIPELINE (TANAP) PROJECT	16
3.14	MANISA – AHMETLİ HEAVY MINERAL SAND PROJECT ARCHAEOLOGICAL MONITORING ACTIVITIES.....	17
3.15	AĞAN THERMAL POWER PLANT PROJECT.....	17
3.16	KARABURUN-2 THERMAL POWER PLANT PROJECT.....	18
3.17	BİGA THERMAL POWER PLANT TEST PIT EXCAVATIONS	18
3.18	KOCAELİ VE İZMİR ENTEGRE SAĞLIK KAMPÜSÜ ARKEOLOJİK YÜZEY ARAŞTIRMALARI.....	19
3.19	PREPARATION OF CULTURAL HERITAGE MANAGEMENT PLAN FOR THE ALPARSLAN II WATER DAM, MUŞ.....	19
3.20	MERSİN-KARAMAN NATURAL GAS PIPELINE PROJECT	20
3.21	AŞAĞI KALEKÖY DAM PROJECT	20
3.22	NATURAL GAS PIPELINE PROJECT IN BURSA MOUNTAINS	21
3.23	KASTAMONU GÖKİRMİŞ COPPER MINE PROJECT	21
3.24	TURK STREAM NATURAL GAS PIPELINE PROJECT.....	22
3.25	KIZILCATERZI WIND POWER PLANT PROJECT	23
3.26	AFYON SEÇKÖY NATURAL GAS PIPELINE PROJECT	23
3.27	TUZ LAKE UNDERGROUND NATURAL GAS STORAGE FACILITY PROJECT	24
3.28	DHI QAR VE SAMAWA 750 MW KOMBİNE ENERJİ ÇEVİRİM SANTRALİ (İRAK)	24
3.29	1915 ÇANAKKALE BRIDGE AND KINALI-TEKİRDAĞ-ÇANAKKALE-SAVAŞTEPE MOTORWAY PROJECT.....	25
3.30	NORTH MARMARA MOTORWAY PROJECT	26
3.31	ANKARA-NİĞDE MOTORWAY PROJECT SURVEY FOR ARCHAEOLOGICAL AND CULTURAL HERITAGE ASSETS.....	27
3.32	TEST PITS AND SALVAGE EXCAVATIONS FOR ANKARA-NİĞDE MOTORWAY PROJECT	28
3.33	SAUDI ARABIA, K.A.CARE POWER PLANT PROJECT FOR ARCHAEOLOGICAL AND CULTURAL HERITAGE ASSETS	29
3.34	MERSİNLİ WIND POWER PLANT PROJECT.....	30
3.35	ARCHAEOLOGICAL GEOPHYSICS STUDIES FOR TÜRKİYE DIŞİŞLERİ BAKANLIĞI BİNA GÜÇLENDİRME VE YENİLEME PROJESİ.....	30
3.36	ARCHAEOLOGICAL GEOPHYSICS STUDIES FOR SİLİFKE MÜHÜR MÜHÜR PROJESİ.....	31
3.37	MEASURED DRAWING AND 3D MODELING STUDIES FOR REŞİTKÖY DAM PROJECT	31
3.38	TAYAKADIN WIND POWER PLANT PROJECT	32
3.39	KIYIKÖY WIND POWER PLANT PROJECT	32
3.40	REHABILITATION PROJECT FOR DİCLE RIVER IN THE CITY OF DIYARBAKIR.....	33
3.41	WEST ANTALYA AIRPORT PROJECT	33
3.42	SALVAGE EXCAVATION AND RECONSTRUCTION STUDIES FOR NEONTEIKHOS ANTIC CITY WITHIN THE SCOPE OF	

<i>MENEMEN-ALIAĞA-ÇANDARLI HIGHWAY PROJECT</i>	34
3.42 <i>CANAL ISTANBUL PROJECT</i>	35
3.43 <i>NEMPORT PORT EXPANSION PROJECT</i>	35
3.44 <i>MEASURED DRAWINGS OF ÜNYE CASTLE</i>	36
3.46 <i>ARCHAEOLOGICAL ASSESSMENT STUDIES FOR MUĞLA PROVINCE, BODRUM DISTRICT, GÜMÜSLÜK VILLAGE</i>	37
3.47 <i>CEYHAN AND FLYOS PORT RAILWAY PROJECT</i>	38
3.48 <i>CEYHAN CULTURAL HERITAGE IMPACT ASSESSMENT STUDIES FOR PROPANE DEHYDRATION (PDH) AND POLYPROPILATED (PP) PRODUCTION FACILITY" PROJECT</i>	39
3.49 <i>YESEMİK POND AND IRRIGATION PROJECT</i>	40
3.50 <i>HALKALI-KAPIKULE HIGH SPEED TRAIN PROJECT</i>	41
3.51 <i>İZMİR KONAK -BUCA – KARABAĞLAR LIGHT RAIL SYSTEM PROJECT</i>	42
3.52 <i>DOCUMENTATION AND SALVAGE EXCAVATION STUDIES FOR ESKİŞEHİR GÖKPINAR DAM PROJECT</i>	43
3.53 <i>REDESIGN, REPAIR, RESTORATION, RECONSTRUCTION AND DİCLE VALLEY RECREATION AREA PROJECT SPECIFIED BY CONSERVATION MASTER PLAN AND URBAN DESIGN PROJECTS IN THE SUR DISTRICT OF DIYARBAKIR AND THE SURROUNDING AREA</i>	44
3.54 <i>ÇATALHÖYÜK PROMOTION AND VISITOR CENTER PROJECT</i>	45
3.55 <i>IDENTIFICATION REPORT ON CULTURAL HERITAGE OF KARAKURT DAM AND HYDROELECTRIC POWER PLANT (HPP) PROJECT</i>	46
3.56 <i>ANKARA-İZMİR HIGH SPEED TRAIN PROJECT</i>	47
3.57 <i>NAKKAŞ-BAŞAKŞEHİR HIGHWAY PROJECT</i>	48
3.58 <i>İSTANBUL EMINÖNÜ – ALİBEYKÖY TRAMWAY PROJECT</i>	49
3.59 <i>CULTURAL HERITAGE IMPACT ASSESMENT FOR AKDENİZ ATATÜRK CULTURE-ART-ENTERTAINMENT-LIFE AND SHOPPING CENTER PROJECT</i>	50
3.60 <i>CULTURAL HERITAGE IMPACT ASSESSMENT STUDIES FOR TUZ LAKE UNDERGROUND NATURAL GAS STORAGE FACILITY CAPACITY INCREASE PROJECT</i>	51
3.61 <i>INTANGIBLE CULTURAL HERITAGE EVALUATION STUDY FOR NAKKAŞ-BAŞAKŞEHİR HIGHWAY PROJECT</i>	52
3.62 <i>MERSİN- ADANA – GAZİANTEP HIGH STANDARD RAILWAY PROJECT</i>	53
3.63 <i>ANKARA AKYURT VACCINE PRODUCTION CENTRE, EXPERIMENTAL ANIMAL PRODUCTION CENTRE AND ABSL3 LEVEL LABORATORY PROJECT</i>	54
3.64 <i>MERSİN- ÇEŞMELİ- ERDEMLİ- SİLİFKE- TAŞUCU MOTORWAY PROJECT (ÇEŞMELİ – KIZKALESİ SECTION)</i>	55
3.65 <i>YERKÖY - KAYSERİ HIGH STANDARD RAILWAY PROJECT</i>	56
3.66 <i>TEST PITS AND SALVAGE EXCAVATIONS FOR BANDIRMA - BURSA - YENİŞEHİR - OSMANELİ HIGH STANDARD RAILWAY PROJECT</i>	57
3.67 <i>ÇANDARLI WIND POWER PLANT PROJECT</i>	58
4 TRAININGS:	59
5 ARCHAEOLOGY POOL PROJECT	60
6 INTERNATIONAL MEETINGS/FAIRS AND PROCEEDINGS	61

1 ABOUT US

REGIO Cultural Heritage Management Consultancy and Training Inc. was established in Ankara in 2009. The company has been committed to the preservation of cultural assets and common heritage of all mankind, primarily in Turkey and its vicinity for their safe transfer to future generations. For this purpose, REGIO employs high calibre experts in Cultural Heritage Management as well as in Documentation and Preservation of Archaeological Assets. REGIO is the first private company in Turkey having adequate capacity, equipment and organization to perform in all regions of the country, working in the documentation and evaluation of cultural assets and assisting in their formal registration for the purposes of transforming them into public property. REGIO is Corporate Friend of Europa Nostra.

Acquiring “Scientific Academic Consultancy” from prominent universities of Turkey and Europe, REGIO’s performance practices comply with international standards and best practices as well as and local laws and regulations.



2 OUR SERVICES

- REGIO Cultural Heritage Management Consultancy Company provides services to construction, mining, investment and infrastructure projects financed by international donors or lenders in order to assist those making realistic plans and minimise risks of delay born by unplanned pause of work due to unexpected encounter with a cultural / archaeological site. In accordance with this purpose, REGIO's services are;
 - Identification of cultural or archaeological assets at the work sites of national and international mine explorations, construction of natural gas and crude oil pipelines, airports, seaports, petrochemical plantations, power plants and similar infrastructure works. Documentation of the identified archaeological assets as well as planning and implementing necessary actions for their conservation.
 - Conducting desktop and field research to support Environmental Impact Assessment (EIA) studies.
 - Developing strategies for the preservation of cultural and archaeological assets that might be affected during construction of oil or gas pipelines, motorways, airports, marine ports, petrochemical plants, power stations, mining and infrastructure projects at national and international scale. Preparing management plans and developing protection procedures.
 - Conducting field work together with local authorities to identify archaeological sites and immovable cultural assets within the site boundaries of mining, infrastructure and construction projects. Collecting and digitising geographical data, preparation of relevant inventory records and their submission to the relevant bodies.
 - Organizing training activities for employees and implementing archaeological supervision, monitoring and evaluation activities for construction and infrastructure projects.
 - Preparation of Chance Find Procedures to be followed during the construction activities. Implementation or monitoring of these procedures.
 - Establishing liaison between project teams and local authorities and support of creating good governance between project stakeholders. Providing consultancy and technical support for establishing formal communication channels with the authorities.
 - For construction and infrastructure projects, in areas having high potential of archaeological or cultural assets, conducting test pit and salvage excavations in line with the local regulations. Evaluation and reporting of the findings.
 - For construction and infrastructure projects, preparation of reports on Cultural and Archaeological Heritage aspects of a project in order to meet expectations of international organisations and lender institutions.

- Organising information meetings targeting local and national authorities as well as non-governmental organisations concerned about the protection of Cultural Heritage. Before and during construction, training of construction staff about the importance of cultural heritage, local and international regulations and practices, preparation of training materials.
- Documentation and reporting of intangible cultural heritage.
- Organisation of training programmes, awareness raising campaigns and other events for the purposes of preservation of cultural heritage and their safe transfer to future generations.



- Monitoring of reinstatement activities to be conducted after the construction phase.

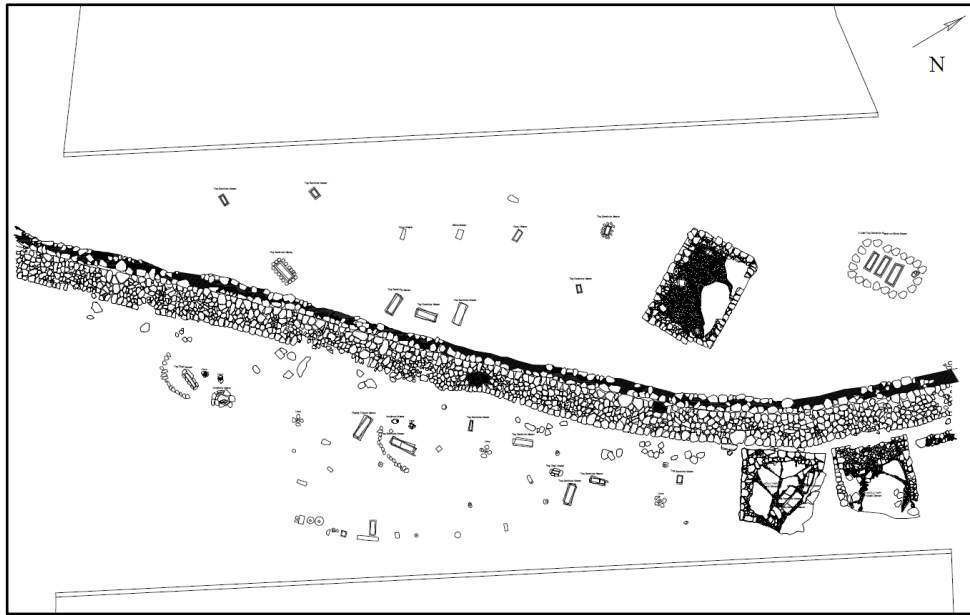




- Preparing emergency plans for the operation phase. Providing consultancy and monitoring services for its implementation.
- Documentation of cultural and archaeological sites with aerial photographs and provision of professional photography and video recording services for identification and documentation of cultural and archaeological assets.



- GIS and mapping services for documentation of cultural heritage assets.



3 OUR REFERENCES

3.1 *NABUCCO NABUCCO NATURAL GAS PIPELINE PROJECT, EAST SECTION. FIELD SURVEY FOR IDENTIFICATION OF ARCHAEOLOGICAL AND CULTURAL HERITAGE ASSETS*

The “East Section” of the Nabucco Natural Gas Pipeline Project is 1100 km long and 500 m. wide, located between Posof at the Georgian Border and Ankara, Bala. Field survey was conducted on this section for the purposes of identifying potential risks of damage to archaeological and cultural assets and thereby minimising risks of delay that might be caused by unexpected encounter with archaeological sites during construction. The identified risks were reported and mitigation measures were recommended. The studies started on 18th October 2010 with literature research. The field survey was conducted between 27th October 2010 and 29th July 2011. This was the pioneering achievement in Turkey conducted in conformity with standards and best practices set by European Convention Criteria and European Convention on the Protection of the Archaeological Heritage (Malta Accord).

As the result of the studies, 266 new archaeological and cultural heritage sites were identified and formally reported together with the GIS data to the Cultural Assets Preservation Boards of the Ministry of Culture and Tourism.



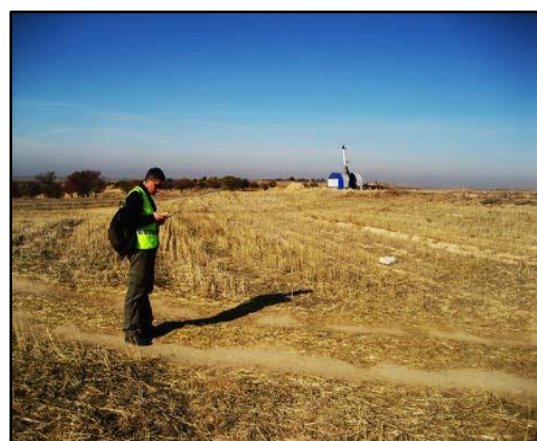
3.2 ZAFER REGIONAL AIRPORT CONSTRUCTION PROJECT, MONITORING, EVALUATION AND TRAINING SERVICES FOR ARCHAEOLOGICAL AND CULTURAL HERITAGE PROTECTION

REGIO provided cultural heritage management consultancy services during the construction of the Zafer Regional Airport that will serve Kütahya, Afyonkarahisar and Uşak provinces. The assignment included preparation and implementation of “Chance Find Procedures”, archaeological monitoring of construction activities and preparation of Watching Briefs, establishing and maintaining liaison with the local museum and the local board of protection of natural and cultural assets. REGIO also provided training to engineers and construction staff on the protection of cultural and archaeological assets during construction activities, as well as on local regulations and international best practices. Archaeological monitoring of the construction activities was completed and observations were reported to the project management daily, monthly and as a final report.



3.3 YENIPAZAR MINING SITE. IDENTIFICATION OF AREAS CARRYING HIGH POTENTIAL OF CULTURAL AND ARCHAEOLOGICAL ASSETS

For the project regarding licensed mining site within the Yozgat Province, REGIO conducted a study within the framework of Environmental Impact Assessment for the purposes of identification of archaeological and cultural assets and their documentation. Services provided included, identification of locations for production units, waste storage facilities and dump sites depending on the location of potential archaeological remains. The studies conducted in compliance with local regulations and international norms. A “Chance Find Procedure” was also prepared. 17 Archaeological assets were identified and their documentation was officially submitted to Sivas Cultural Assets Preservation Board of the Ministry of Culture and Tourism.



3.4 GEBZE- ORHANGAZI-İZMİR MOTORWAY PROJECT (INCLUDING İZMIT BAY CROSSING) CULTURAL HERITAGE SURVEYING AND DOCUMENTATION STUDIES

REGIO conducted archaeological survey and documentation works along the motorway project connecting İstanbul and İzmir through a suspension bridge over the İzmit Bay. The area under study is 421 km long including the connection roads and 500m wide including the impact corridor of the motorway. Tangible and intangible assets over the construction area are identified and recorded following local regulations and international norms and best practices. The first 266 km section between Gebze and Balıkesir is completed and 64 new sites carrying archaeological and cultural value were identified. These sites were reported to the relevant boards for protection of cultural assets. Consultancy services were delivered to the contractor in order to avoid interruption in construction activities.



3.5 TEST PIT EXCAVATIONS FOR GEBZE-ORHANGAZI-İZMİR MOTORWAY PROJECT

On behalf of the contractor Otoyol AS, REGIO conducted archaeological survey works and identified sites with potential archaeological and cultural value and estimated their expansion zones during the survey of the Gebze-Bursa section of the motorway project between 18th April and 17th September 2012. Studies were conducted in 10 different locations under the supervision of Bursa Archaeological Museum.



Second phase of the test pit excavations were conducted in 4 different locations under the supervision of the Balıkesir Kuvayi Milliye Museum between 3rd -29th August 2016.

3.6 SALVAGE EXCAVATIONS FOR GEBZE-ORHANGAZI-İZMİR MOTORWAY (INCLUDING İZMIT BAY CROSSING) PROJECT

The excavations were conducted on Havuzdere Necropolis between 10th June and 27th September 2013. The area is located in Havuzdere village of Altınova District in Yalova province and coincides with the motorway construction corridor. The area was declared as third degree protection area.

Excavations were conducted under the supervision of Bursa Museum Directorate and the location was discovered to be a cemetery belonging to Late Roman – Byzantine period. The artefacts revealed were delivered to Bursa museum while the skeletal remains were transferred to the laboratories of Anthropology Department of Ankara University for further studies. A total of 72 pits having size of 10x10 m were excavated during the studies and the architectural discoveries were documented following scientific methods.

Another salvage excavation for the project was on Yazırtepe Tumulus which is located on Umurbey neighbourhood of Gemlik District of Bursa Province. Excavations were conducted between 11th November and 4th December 2013 on the area which was registered as first degree protection site. Graves and funeral gifts discovered indicate that the cemetery belongs to the Roman Period 1st Century AD.



Also, salvation excavation in the project was conducted between 13th August 2016-29th July 2017 on the first and second degree protection sites located in Ovacık quarter of the Karesi District of Balıkesir Province. 90 trenches with a size of 10m x 10m were excavated under the supervision of Balıkesir Kuvayi Milliye Museum and the scientific documentation of findings were completed and these findings are registered in the inventory.



International best practices were followed in all excavation activities which are implemented in compliance with local regulations and international standards. All reports prepared by REGIO were approved in Regional Preservation Boards of Cultural Assets and official decisions were taken for the continuation of the motorway construction.

3.7 IRAN – TURKEY – EUROPE (ITE) NATURAL GAS PIPELINE PROJECT. ARCHAEOLOGICAL FIELD SURVEY OF THE PIPELINE ROUTE

Within the scope of the EIA (Environmental Impact Assessment) study, the 1795 km long route and its impact area between Doğu Beyazıt, Ağrı and İpsala, Edirne have been surveyed between 3rd June and 18th July 2012. 166 sites having archaeological and cultural potential were identified within pipeline route and the project impact area. Impact assessment of these areas were conducted following best practices and international standards and all data collected during the study were officially submitted to relevant Protection Boards of the Ministry of Culture and Tourism.



3.8 TRANS ANATOLIAN NATURAL GAS PIPELINE (TANAP) PROJECT SURVEY FOR ARCHAEOLOGICAL AND CULTURAL HERITAGE ASSETS

For the Trans Anatolian Natural Gas Pipeline (TANAP) Project, a preliminary survey was conducted between 26th April 2012 and 7th June 2012 in order to assess the cultural heritage potential of the whole pipeline route and its 5 km corridor. The preliminary studies started at Ardahan, Posof and ended at Edirne, İpsala. Alternative routes were also surveyed.

The detailed archaeological survey of TANAP under the ESIA studies was carried out between May 1st and 31st December 2013 in order to define exact locations of potential archaeological and immovable cultural heritage sites within the 500 m corridor of the preferred pipeline route. 131 unregistered archaeological and historical sites were identified during the field survey. Impact assessment studies were completed in those areas following best practices and international standards and all collected data have been submitted to the relevant Protection Boards of the Ministry of Culture and Tourism.



3.9 BAKU-TBLISI-CEYHAN PIPELINE RE-ROUTE SURVEY

A parallel pipeline was required to be constructed between 382+616 and 383+ 282 kilometer points (Müftüoğlu Village, Tercan District, Erzincan Province) of the Baku-Tblisi-Ceyhan Crude Oil Pipeline Project. Archaeological survey of this area was carried out by REGIO in August 2012. In addition to the surface study geological drills were also investigated from archaeological point of view and archaeological monitoring services were provided during the excavations.



3.10 Filyos Harbour Archaeological Survey

The Filyos Harbour project of the Ministry of Transport has been implemented with technical assistance from the European Union. For the purposes of identifying the cultural assets and developing strategies which define the steps to be taken for the conservation of movable and immovable cultural assets before and during the construction activities, REGIO conducted field survey on the construction zone in October 2012.

The assignment included the identification of areas carrying high risk of presence of archaeological assets and their reporting together with the proposed procedures to be carried out for their preservation. As the result of the surveys and assessment of the findings, the report describing procedures to be followed in the three phases of the project, that is, “before, during and after the construction activities” was submitted to the Ministry of Transport and the EU Delegation in Turkey on November 16th, 2012.



3.11 Yumurtalik Free Trade Zone Archaeological Survey

The free trade zone to be constructed as private investment is located on the Mediterranean coast in Turunclu village of Erzin district of Hatay province. The survey was conducted and completed in April 2013. The study also covered reporting of the location and legal status of all cultural and archaeological assets registered in the inventory of the Ministry of Culture and Tourism which are known to be in the vicinity of the construction zone. All the findings were reported to the contractor, Ronesans Holding.



3.12 NORTH MARMARA MOTORWAY (INCLUDING THE 3RD CROSSING OVER BOSPORUS) PROJECT OTOYOL

The study for the identifying of tangible cultural and archaeological assets located on the route and on the impact zone of the North Marmara Motorway Project and developing impact minimizing strategies was conducted in May 2013. The second phase of the works covers desktop studies, and preparation of risk maps. The report covering the location of tangible cultural or archaeological assets that are identified on the route and within the impact zone, their condition, legal status, geographical position and their expansion was submitted. Based on the findings, the contractor implements mitigation majors including a possible route change. The report was submitted to the supervising company AECOM on 30th of May 2013.



3.13 TEST PIT AND SALVAGE EXCAVATIONS FOR TRANS ANATOLIAN NATURAL GAS PIPELINE (TANAP) PROJECT

Archaeological sites identified during the ESIA (Environmental and Social Impact Assessment) study of the Trans Anatolian Natural Gas Pipeline (TANAP) Project which remained within the construction corridor were attempted to be avoided by route change. Archaeological excavations started on 14th October 2014 for those where route change is not possible.

Studies were conducted in Erzurum, Eskişehir, Ankara and Balıkesir as test pit and salvage excavations, preparation of measured drawings and restoration. Excavations were conducted in 26 different locations by the Archaeology Team provided by REGIO under the supervision of Museum Directorates.

International best practices were followed in all test pit and salvage sites and the studies were conducted in line with local regulations and international standards. Technical reports prepared by REGIO were approved by relevant Protection Boards were approved and formal decisions were taken for the construction of the pipeline as it was planned in these locations.



3.14 MANISA – AHMETLI HEAVY MINERAL SAND PROJECT ARCHAEOLOGICAL MONITORING ACTIVITIES

Between the 16th and 19th June 2014, archaeological monitoring and reporting activities were held for the test pits excavated at the implementation site of “Ahmetli Heavy Metal Mining Field Project” in Salihli district of Manisa.



3.15 AĞAN THERMAL POWER PLANT PROJECT

In the project location in Karabiga Quarter of Biga District of Çanakkale Province, site survey for cultural and archaeological assets were completed in September 2014 prior to construction activities. Detailed reports for the studies were handed over to ÇINAR Engineering and Consultancy.



3.16 KARABURUN-2 THERMAL POWER PLANT PROJECT

In the project location in Karabiga Quarter of Biga District of Çanakkale Province, site survey for cultural and archaeological assets were completed in September 2014 prior to construction activities. Detailed reports for the studies were handed over to ÇINAR Engineering and Consultancy.



3.17 BIGA THERMAL POWER PLANT TEST PIT EXCAVATIONS

In the project location in Fırıncık at Karabiga Quarter of Biga District of Çanakkale Province, archaeological excavations for the identification and protection of archaeological and immovable cultural assets were conducted between 13th April 2015 and 18th May 2015. Excavations were conducted by REGIO under the supervision of Çanakkale Museum. International best practices were followed in all test pit and salvage sites and the studies were conducted in line with local regulations and international standards. Technical reports prepared by REGIO were submitted to Protection Boards.



3.18 KOCAELI VE İZMİR ENTEGRE SAĞLIK KAMPÜSÜ ARKEOLOJİK YÜZEY ARAŞTIRMALARI

Between 1st March 2015 and 15th April 2015, desktop research, field investigation, impact assessment and reporting works were conducted by REGIO for the purpose of developing strategies for the activities needed to be held before and after construction works for identifying and conservation of the potential archaeological and immovable cultural properties at the construction sites of health campuses at Kocaeli and İzmir.



3.19 PREPARATION OF CULTURAL HERITAGE MANAGEMENT PLAN FOR THE ALPARSLAN II WATER DAM, MUŞ

An outline “Cultural Heritage Management Plan and Chance Find Procedure” considering the conservation and salvage of archaeological and immovable cultural properties in the construction sites and the water catchment basin of the Alparslan II Water Dam and Alparslan II Hydroelectric Power Plant located in Murat Creek, a tributary of the Euphrates river in Muş Province, was prepared and submitted to Enerjisa Co.



3.20 MERSIN-KARAMAN NATURAL GAS PIPELINE PROJECT

Desk study and archaeological survey for the identification of potential archaeological and immovable cultural assets over the preliminary route of the Mersin Karaman Natural Gas Pipeline was conducted between 15th May 2015 and 18th June 2015. The “Archaeological Heritage Impact Assessment Report” covering the findings of the studies were delivered to Sebat Proje Ltd.



3.21 AŞAĞI KALEKÖY DAM PROJECT

Site studies were conducted in Muratlı, Oymapınar, Düzağaç, Bozkanat, Gözeler, Harabe, Gökçeli, Kuşburnu vilages of Solhan and Genç Districts of Bingöl Province which remains under the impact area of the dam project between October 2016. The “Archaeological Heritage Impact Assessment Report” prepared in line with international standards and best practices which also covers the findings of the desk study was delivered to Kalehan Enerji and Golder Associates on 1st November 2016.



3.22 NATURAL GAS PIPELINE PROJECT IN BURSA MOUNTAINS

The preliminary route passing through İnegöl, Keles, Orhaneli, Büyükorhan, Harmancık ve Mustafakemalpaşa Districts of Bursa Province were surveyed for the purposes of identifying archaeological and cultural assets between 8th -10th June 2016. The “Archaeological Heritage Impact Assessment Report” covering the findings of the studies were delivered to Sebat Proje Ltd.



3.23 KASTAMONU GÖKIRMAK COPPER MINE PROJECT

Within the International ESIA studies, Gökırmak Copper Mine located in Hanönü District of Kastamonu Province and operated by ACACIA Mining was surveyed for the purposes of identifying archaeological and cultural assets between 5th January 2017 and 22nd September 2017. Desk studies were also conducted for the area. All reports and documents were delivered to consultant company AECOM.



3.24 *TURK STREAM NATURAL GAS PIPELINE PROJECT*

Facilities planned to be built within the Kıyıköy located in Vize District of Kırklareli Province under the Turk Stream Natural Gas Pipeline project as well as the location of pipeline connections and impact areas were surveyed for identification of potential archaeological and immovable cultural assets. Desk and field studies were conducted in line with international standards to assess the impact of the project on the area and the findings and recommendations were presented in a report. The studies were conducted between 25th April 2017 and 28th September 2017.



3.25 KIZILCATERZI WIND POWER PLANT PROJECT

The wind turbines were planned to be erected in Sofuköy Quareter of Şarköy District of Tekirdağ Province and the area was surveyed in April 2017 for the identification of potential archaeological and cultural assets. Findings of the study were presented in a report in line with international standards presented to Golder Associates Ltd. on 15th May 2017.



3.26 AFYON SEÇKÖY NATURAL GAS PIPELINE PROJECT

The natural gas pipeline route of approximately 276 km that will connect Cay District of Afyon Province to Osmangazi District of Bursa Province was surveyed between 19th June 2017 and 15th July 2017 for identification of archaeological and cultural assets. The report presenting the findings was submitted to Sebat Proje on 21st July 2017.



3.27 TUZ LAKE UNDERGROUND NATURAL GAS STORAGE FACILITY PROJECT

In December 2017, cultural heritage management plan and chance find procedure were prepared and submitted to the relevant parties in accordance with "World Bank (IFC), PR 8: Cultural Heritage" for the Tuz Lake Underground Natural Gas Storage Facility Project planned to be carried out within the borders of Sarıyahşi, Ağaçören, Ortaköy, Eski and central districts of Aksaray province, Emirgazi district of Konya province, and Evren district of and Ankara province.

3.28 DHI QAR VE SAMAWA 750 MW KOMBINE ENERJİ ÇEVİRİM SANTRALİ (IRAK)

Location of the facilities to be constructed within the "Dhi Qar" and "Samawa" power plants were surveyed for identification of archaeological and cultural assets within their impact area. The studies were conducted between 24th May 2017 and 8th June 2017 as desk studies, field surveys and impact assessment studies. Findings of the study were reported to 2U1K Engineering and Consultancy on 8 th June 2017.



3.29 1915 ÇANAKKALE BRIDGE AND KINALI-TEKİRDAĞ-ÇANAKKALE-SAVAŞTEPE MOTORWAY PROJECT

Archaeological survey to identify archaeological and immovable cultural assets was conducted on the route of Malkara-Çanakkale Motorway and connecting roads to 1915 Çanakkale Bridge. The field studies were conducted between 10th June 2017 and 16th July 2017. During the studies 33 sites carrying archaeological potential and are not registered in the inventory of Ministry of Culture and Tourism were identified. Impact of the construction on these identifies sites were assessed following international best practices and international standards and all data collected during the study was delivered to Çanakkale Motorway and Bridge Construction Investment Operation AS.



3.30 NORTH MARMARA MOTORWAY PROJECT

Field surveys to identify potential archaeological areas and immovable cultural assets and developing strategies to minimise impact was conducted along the North Marmara Motorway route between 23rd of January 2017 and 6th of November 2017. As the result of the studies which were conducted in compliance with international standards, 181 new archaeological and historical locations which are not registered by the Ministry of Culture were discovered. Impact assessment and reporting studies were conducted following international best practices and standards and all data collected were delivered to North Marmara Motorway Project Management as an Archaeological and Cultural Heritage Impact Assessment Report.



3.31 ANKARA-NİĞDE MOTORWAY PROJECT SURVEY FOR ARCHAEOLOGICAL AND CULTURAL HERITAGE ASSETS

Within the scope of Ankara-Niğde Motorway Project, desktop studies and archaeological field survey were conducted between 09.01.2018 and 03.02.2018 for the identification of potential archaeological and immovable cultural assets over the preliminary and alternative routes by REGIO. While start point of the studies was Ankara, the finish point was Niğde province. Studies conducted under ESIA of the Project were conducted between 05.02.2018 and 30.03.2018.

The areas under study are 500m wide including the impact corridor of the motorway, camp sites, quarry sites storage areas and other areas of construction facilities. As a result of these studies 51 new archaeological locations which are not registered by the Ministry of Culture were discovered. Impact assessment studies were conducted following international best practices and standards and all data collected were delivered to relevant Regional Board for Conservation of Cultural Assets.



3.32 TEST PITS AND SALVAGE EXCAVATIONS FOR ANKARA-NİĞDE MOTORWAY PROJECT

Test pits and salvage excavation studies were initiated on 3rd May 2018 in archaeological areas discovered under ESIA studies of Ankara-Niğde Motorway Project, remained within the construction corridor and not be avoided by route change. Excavation studies are conducting in Ankara, Konya and Aksaray province as test pit and salvage excavations, preparation of measured drawings and restoration. The studies are conducting in 7 different archaeological locations under the supervision of relevant Museum Directorates with qualified experts and technical assistance provided by REGIO.

International best practices were followed in all test pit and salvage sites and the studies were conducted in line with local regulations and international standards. Technical reports prepared by REGIO were approved by relevant Protection Boards were approved and formal decisions were taken for the construction of the project as it was planned in these locations.



SAUDI ARABIA, K.A.CARE POWER PLANT PROJECT FOR ARCHAEOLOGICAL AND CULTURAL HERITAGE ASSETS

Location of the facilities to be constructed within the “K.A.CARE” power plant on Arabian Gulf , east coast of Saudi Arabia were surveyed for identification of archaeological and cultural assets within their impact area. The studies were conducted between 23rd October 2018 and 6th November 2018 as desk studies, field surveys and impact assessment studies. Impact of the construction on these identifies sites were assessed in line with international best practices and international standards and all data collected during the study was delivered to Assystem Envy Energy and Environmental Investments Inc. on 6th November 2018.



3.33 MERSINLI WIND POWER PLANT PROJECT

Cultural heritage impact assessment studies were carried out in April-May 2018 in compliance with "European Bank for Reconstruction and Development (EBRD), Performance Requirement 8: Cultural Heritage" for the Mersinli Wind Power Plant Project planned to be installed within the borders of Bayındır District of İzmir Province, and the assessment report of the study was submitted to AECOM Consultancy and Engineering Company.



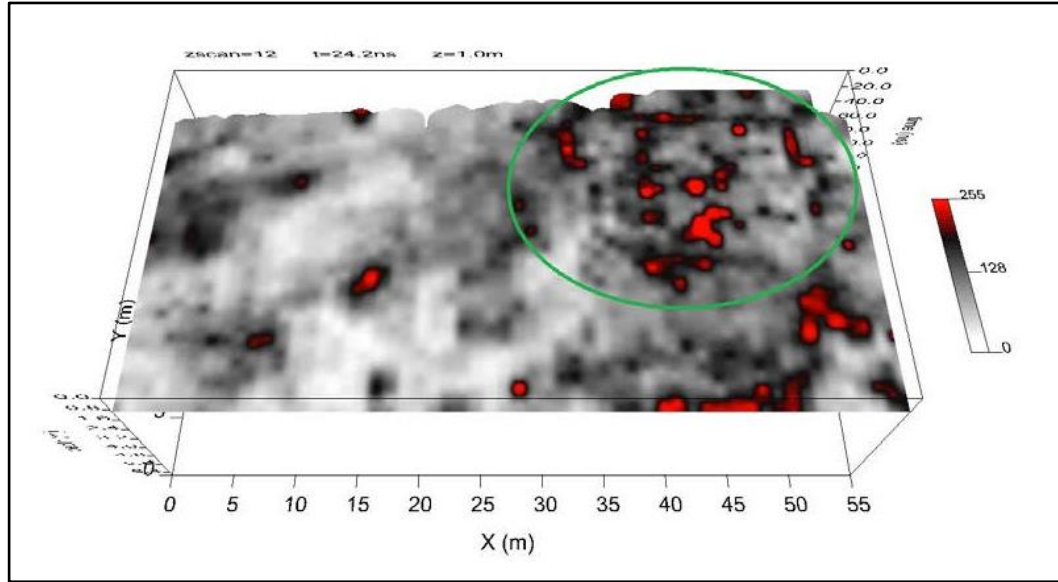
3.34 ARCHAEOLOGICAL GEOPHYSICS STUDIES FOR TÜRKİYE DİYANET FOUNDATION BUILDING REINFORCEMENT AND RENOVATION PROJECT

Within the scope of the Reinforcement and Renovation of Türkiye Diyanet Foundation Building planned to be constructed in the area located in Istanbul Province, Fatih District, Eminönü Klod Farer Street, archaeological geophysical studies were carried out in May 2018 in accordance with the decision no: 6172 of the Directorate of Regional Board of Preservation of Cultural Assets dated 11.04.2018, and the assessment report prepared was submitted to Metmar Engineering Inc.



3.35 ARCHEOLOGICAL GEOPHYSICS STUDIES FOR SILIFKE MUNICIPALITY PARKING PROJECT

Archaeological geophysics studies were carried out in May 2018 to identify potential cultural heritage elements in the parking area planned to be constructed within the borders of Mersin Province, Silifke District, and the evaluation report prepared was submitted to Silifke Municipality.



3.36 MEASURED DRAWING AND 3D MODELING STUDIES FOR REŞİTKÖY DAM PROJECT

In compliance with "Principle Decision no. 36 dated 10.04.2012 on the protection of immovable cultural assets affected by the dam areas of the High Council for the Protection of Cultural Assets" for the Reşitköy Dam planned to be constructed within the borders of Balıkesir Province, Burhaniye District, the ancient quarry, which remains within the boundaries of the project area and registered as a 1st degree archaeological site, 3D modelling and measure drawings were prepared and submitted to the General Directorate of State Hydraulic Works of Turkey (DSİ) in August 2018.



3.37 TAYAKADIN WIND POWER PLANT PROJECT

Cultural heritage impact assessment studies were carried out in April-July 2019 in compliance with "European Bank for Reconstruction and Development (EBRD), Performance Requirement 8: Cultural Heritage" for the Tayakadın Wind Power Plant planned to be installed within the borders of Istanbul Province, Silivri and Çatalca Districts, and the cultural heritage impact assessment report was submitted to GEM Sustainability Services and Consultancy Inc.



3.38 KIYIKÖY WIND POWER PLANT PROJECT

Cultural heritage impact assessment studies were conducted in April-May 2019 in compliance with "European Bank for Reconstruction and Development (EBRD), Performance Requirement 8: Cultural Heritage" for the Kıyıköy Wind Power Plant planned to be installed within the borders of Kırklareli province, Vize district, Kıyıköy village, and the cultural heritage impact assessment report was submitted to GEM Sustainability Services and Consultancy Inc.



3.39 REHABILITATION PROJECT FOR DICLE RIVER IN THE CITY OF DIYARBAKIR

As part of the rehabilitation project planned to be constructed on the Dicle River passing through the east of Diyarbakır Province, within the boundaries of the "Diyarbakır Fortress and Hevsel Gardens Cultural Landscape Area", which is on UNESCO World Cultural Heritage List , cultural heritage impact assessment studies of the Diyarbakır Fortress and Hevsel Gardens were carried out in May 2018 in compliance with the "UNESCO Criteria and European Bank for Reconstruction and Development (EBRD), Performance Requirement 8: Cultural Heritage". The comprehensive cultural heritage impact assessment report prepared was submitted to the General Directorate of State Hydraulic Works of Turkey (DSİ).



3.40 WEST ANTALYA AIRPORT PROJECT

Cultural heritage impact assessment studies were carried out in March-April 2019 in accordance with "European Bank for Reconstruction and Development (EBRD), Performance Requirement 8: Cultural Heritage" for the Western Antalya Airport Project planned to be constructed within the borders of Antalya Province, Kaş District, and the cultural heritage impact assessment report of the studies was submitted to the General Directorate of State Airports Authority.



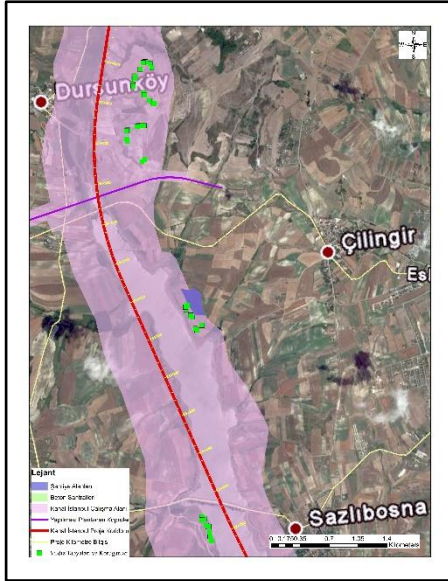
3.41 SALVAGE EXCAVATION AND RECONSTRUCTION STUDIES FOR NEONTEIKHOS ANTIC CITY WITHIN THE SCOPE OF MENEMEN-ALIAĞA-ÇANDARLI HIGHWAY PROJECT

Salvage excavation studies were conducted between 1st August 2018 and 30th September 2018 in location of the highway planned to be constructed near İzmir province, Menemen District, and Yanıkköy in order to identify archaeological and immovable cultural assets within the impact area. The excavation studies were conducted under the supervision of İzmir Archaeology Museum. In 2019-2020, the cobble stones of the ancient road at the intersection of the highway were numbered and removed and then placed in their original positions. Excavations following the reconstruction studies were carried out under the supervision of İzmir Archaeological Museum. During all the studies conducted in the field, international best practices were considered and the studies were carried out in accordance with international standards and national legislation. A technical report prepared for the outcomes of the study was submitted and approved to the relevant protection board.



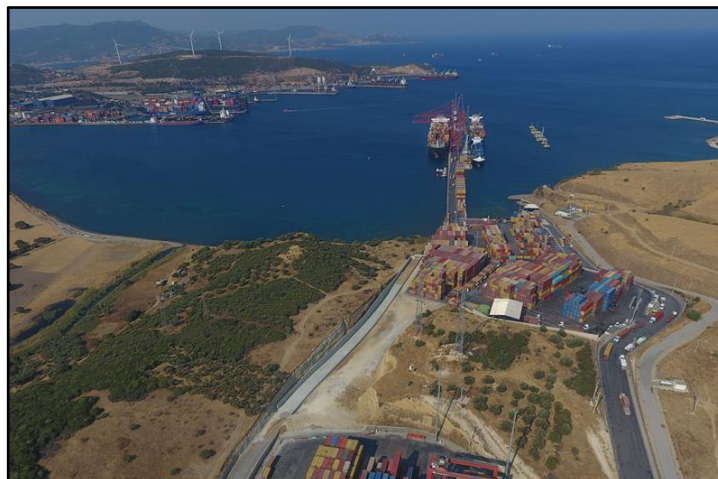
3.42 CANAL ISTANBUL PROJECT

Cultural heritage impact assessment studies were carried out in accordance with "European Bank for Reconstruction and Development (EBRD), Performance Requirement 8: Cultural Heritage" for the Canal Istanbul Project planned to be constructed within the borders of İstanbul Province, Arnavutköy, Avcılar, Küçükçekmece, Basaksehir, Bakırköy Districts. The cultural heritage impact assessment report was submitted to Çınar Engineering Consultancy Inc.



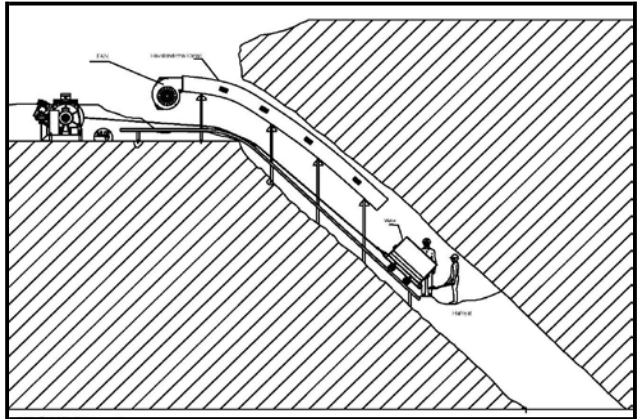
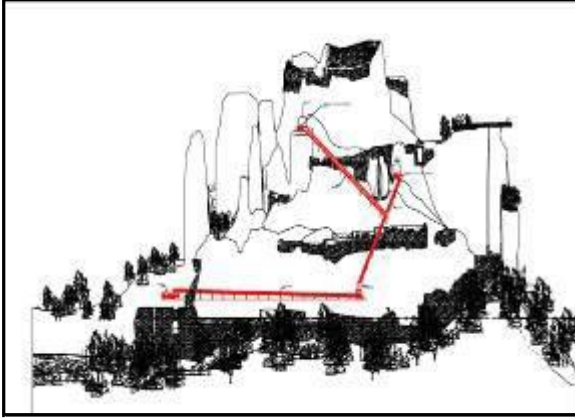
3.43 NEMPORT PORT EXPANSION PROJECT

Cultural heritage impact assessment studies were carried out in September 2019 in compliance with "European Bank for Reconstruction and Development (EBRD), Performance Requirement 8: Cultural Heritage" for the Nemport Port Expansion Project planned to be constructed within the borders of Aliğa district, İzmir province. A cultural heritage impact assessment report as the result of these studies was submitted to Nemport Port Operator Inc.



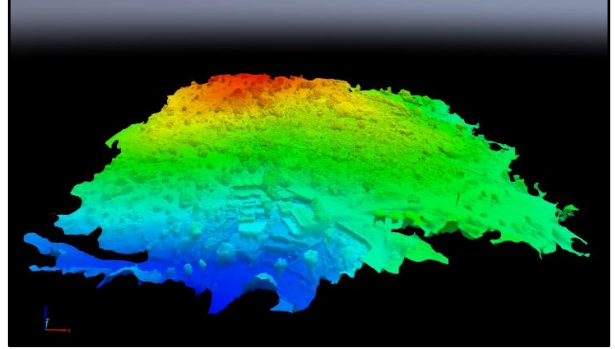
3.44 MEASURED DRAWINGS OF ÜNYE CASTLE

Within the cleaning and restoration of two passages in the Ünye Castle planned to be implemented by Ünye Municipality, REGIO produced the measured drawings of these passages and prepared an application project. The project is approved by Samsun Protection Board for Cultural Assets and preliminary studies for the implementation are under progress.



3.46 ARCHAEOLOGICAL ASSESSMENT STUDIES FOR MUĞLA PROVINCE, BODRUM DISTRICT, GÜMÜŞLÜK VILLAGE

In March 2019, a comprehensive archaeological assessment study was carried out on interaction with the boundaries of the Ancient City of Myndos and archaeological status of the estate-land located in lot no. 305 and parcel no.70 in Muğla Province, Bodrum District, Gümüşlük village. The assessment report prepared in compliance with national legislation and standards has been forwarded to the estate-land owner to submit to the relevant board.



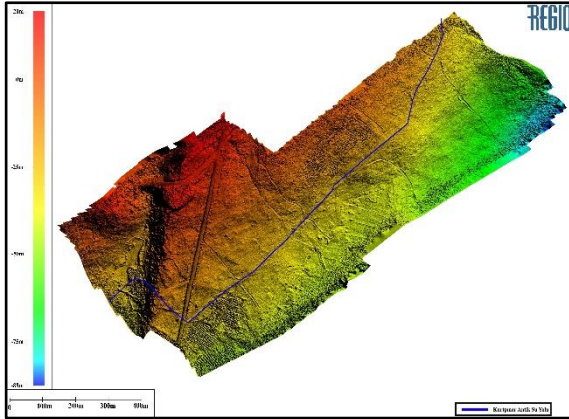
3.47 CEYHAN AND FITYOS PORT RAILWAY PROJECT

In order to examine possible effects of the railway planned to be constructed in Ceyhan District of Adana province, and Zonguldak province on cultural heritage, cultural heritage impact assessment studies were carried out in January 2020 in compliance with national and international standards. The impact assessment report prepared on tangible and intangible cultural heritage was submitted to ÇINAR Engineering Consultancy Inc.



3.48 CEYHAN CULTURAL HERITAGE IMPACT ASSESSMENT STUDIES FOR PROPANE DEHYDRATION (PDH) AND POLYPROPILATED (PP) PRODUCTION FACILITY" PROJECT

In January 2020, cultural heritage impact assessment studies were carried out in accordance with national and international standards for the Propane Dehydration (PDH) and Polypropylene (PP) Production Facility planned to be constructed within the borders of Ceyhan District of Adana Province. The report prepared was submitted to the Royal Haskoning DHV.



3.49 YESEMEK POND AND IRRIGATION PROJECT

In order to determine the possible effects of the pond which is planned to be constructed on Yesemek River, which is located within the borders of Islahiye district of Gaziantep Province on the "Yesemek Quarry and Sculpture Workshop" on the UNESCO World Cultural Heritage Tentative List; Cultural Heritage Impact Assessment Studies were carried out in June 2020 in accordance with national and international standards. The cultural heritage impact assessment report was prepared in compliance with ICOMOS standards was submitted to ÇINAR Engineering Consultancy Inc.



3.50 HALKALI-KAPIKULE HIGH SPEED TRAIN PROJECT

Photographic survey studies to analyse the impact of all Project activities on cultural assets on the Halkalı-Kapıkule High Speed Train Project route were carried out in June 2020 in accordance with international standards. The photographic study survey report was submitted to ÇINAR Engineering Consultancy Inc.



3.51 İZMİR KONAK -BUCA – KARABAĞLAR LIGHT RAIL SYSTEM PROJECT

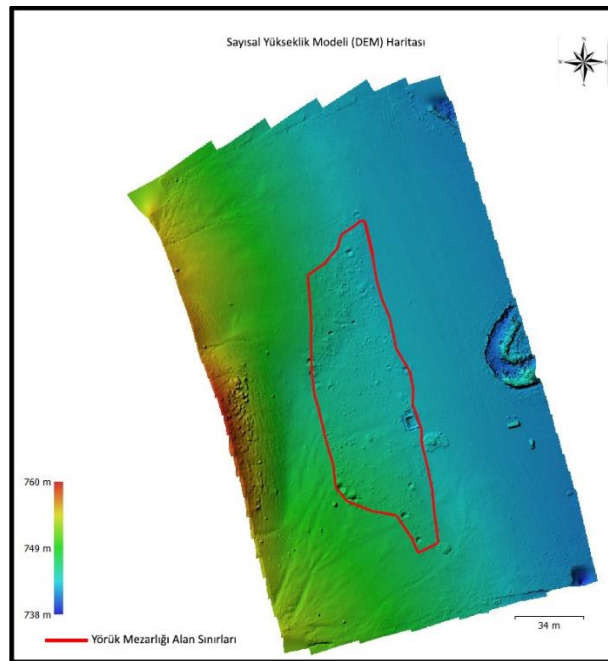
A photographic survey assessment study was conducted to analyse the impact of metro line to be constructed between İzmir Konak, Buca and Karabağlar district on cultural assets from photographic perspective in accordance with EBRD PR8. The photographic survey assessment report prepared was submitted to ACE Consultancy in October 2020.



3.52 DOCUMENTATION AND SALVAGE EXCAVATION STUDIES FOR ESKİŞEHİR GÖKPINAR DAM PROJECT

The archaeological excavation studies to determine and protect archaeological and immovable cultural assets in the Yörük Cemetery, which is within the lake reservoir area of Eskişehir Gökpınar Dam planned to be constructed, were carried out together with Eskişehir Etil Archaeological Museum in November-December 2020.

During the salvage excavation and documentation studies carried out in the area, international best practices were considered and the studies were carried out in accordance with international standards and national legislation. Technical documentation and reports prepared as the results of the study were submitted to Eskişehir Etil Archaeological Museum and DSI Eskişehir Regional Directorate of State Hydraulic Works of Turkey (DSİ)



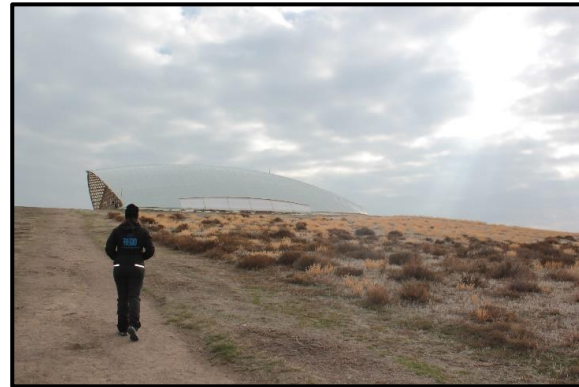
3.53 REDESIGN, REPAIR, RESTORATION, RECONSTRUCTION AND DICLE VALLEY RECREATION AREA PROJECT SPECIFIED BY CONSERVATION MASTER PLAN AND URBAN DESIGN PROJECTS IN THE SUR DISTRICT OF DIYARBAKIR AND THE SURROUNDING AREA

Cultural heritage impact assessment studies were carried out between April 2020 and April 2021 to determine the possible effects of 7 projects planned in and around Diyarbakir Suriçi Region to the Buffer and Heritage Area boundaries of Diyarbakir Castle and Hevsel Gardens Cultural Landscape Area, which are on UNESCO World Heritage List. Cultural heritage impact assessment studies were completed in compliance with ICOMOS standards, and the prepared impact assessment report was submitted to the Ministry of Environment and Urbanization to be submitted to UNESCO.



3.54 ÇATALHÖYÜK PROMOTION AND VISITOR CENTER PROJECT

Cultural heritage impact assessment studies were carried out in accordance with ICOMOS standards between December 2020 and February 2021 for the "Çatalhöyük Promotion and Visitor Center Project" planned to be constructed on the buffer zone boundaries of Çatalhöyük, a UNESCO World Heritage Site. The report was submitted to Konya Metropolitan Municipality to submit for UNESCO approval.



3.55 IDENTIFICATION REPORT ON CULTURAL HERITAGE OF KARAKURT DAM AND HYDROELECTRIC POWER PLANT (HPP) PROJECT

In order to guide the "Karakurt Dam and HPP Project", regarding the preservation of archaeological and immovable cultural heritage affected by the project, identification, registration, salvage /protection studies and legal decision processes carried out by official institutions were reviewed. Findings of the study are presented in a report format and the report was submitted to Çınar Engineering Consultancy Inc.



3.56 ANKARA-İZMİR HIGH SPEED TRAIN PROJECT

The studies carried out within the scope of Ankara-Izmir High Speed Train Project ESIA (Environmental and Social Impact Assessment) were carried out in January-March 2021. During the studies, field survey studies were carried out to determine the archaeological and immovable cultural heritage on the impact corridor and within the borders of the project. As the result of these studies, 31 new archaeological and historical sites that are not included in the inventory of the Ministry of Culture have been **determined**. The impact assessment studies for these areas were completed in compliance with World Bank- International Finance Corporation (IFC) and European Bank for Reconstruction and Development (EBRD) standards, and all the data obtained were officially submitted to the relevant Cultural Asset Protection Regional Boards of the Ministry of Culture and Tourism of Turkey.



3.57 NAKKAŞ-BAŞAKŞEHİR HIGHWAY PROJECT

Scoping and preliminary assessment studies were carried out in February-April 2021 to identify immovable cultural and archaeological assets located within the Nakkaş-Başakşehir Highway Project route and its impact area and to determine the mitigation strategies. The assessment report prepared in accordance with the national legislation, UNESCO criteria and IFC PS8 considering the studies carried out has been submitted to ACE Consultancy.



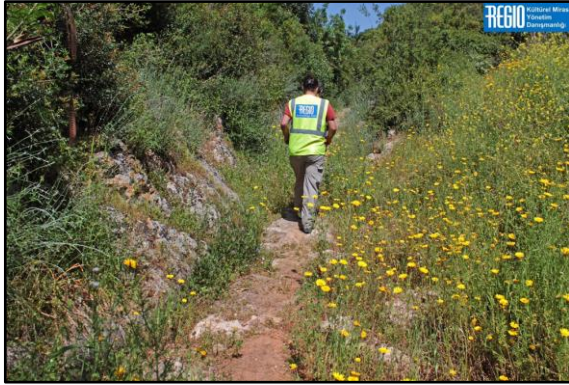
3.58 İSTANBUL EMINÖNÜ – ALIBEYKÖY TRAMWAY PROJECT

The tramway line, which its construction phase was completed within the borders of Istanbul Province, Eminönü and Fatih districts, has been inspected for presence of cultural heritage elements. Scoping and preliminary evaluation studies have been carried out for section of the tramway line that is to be constructed. The studies were carried out in accordance with national legislation, UNESCO criteria and World Bank ESS8. The assessment report for the studies completed in April 2021 has been submitted to the French Development Agency (Agence Française de Développement (AFD)).



3.59 CULTURAL HERITAGE IMPACT ASSESMENT FOR AKDENİZ ATATÜRK CULTURE-ART-ENTERTAINMENT-LIFE AND SHOPPING CENTER PROJECT

Cultural heritage impact assessment studies were carried out in May 2021 in accordance with World Bank (IFC) and European Bank for Reconstruction and Development (EBRD) standards for the "Akdeniz Ataturk Culture-Arts-Entertainment-Life and Shopping Center Project" planned to be built within the borders of Konyaalti district of Antalya province. The cultural heritage impact assessment report prepared was submitted to ÇINAR Engineering Consultancy Inc.



3.60 CULTURAL HERITAGE IMPACT ASSESSMENT STUDIES FOR TUZ LAKE UNDERGROUND NATURAL GAS STORAGE FACILITY CAPACITY INCREASE PROJECT

Cultural heritage impact assessment studies were carried out in May 2021 in compliance with "The International Finance Corporation (IFC), PR 8: Cultural Heritage" within the scope of Tuz Lake Underground Natural Gas Storage Facility Capacity Increase Project. The facility is under construction within the boundaries of Sarıyahşi, Ağaçören, Ortaköy, Eskil and central districts of Aksaray Province, Emirgazi district of Konya Province and Evren District of Ankara province. The cultural heritage impact assessment report prepared was submitted to ÇINAR Engineering Consultancy Inc.



3.61 INTANGIBLE CULTURAL HERITAGE EVALUATION STUDY FOR NAKKAŞ-BAŞAKŞEHİR HIGHWAY PROJECT

In order to evaluate the possible effects of Nakkaş Başakşehir Highway Project on the intangible cultural heritage elements, Impact Assessment Studies were carried out in the project route and its impact area in June 2021. The Impact Assessment Report considering intangible cultural heritage was prepared in compliance with national and international standards and was submitted to ACE Consultancy.



3.62 MERSIN- ADANA – GAZIANTEP HIGH STANDARD RAILWAY PROJECT

The studies carried out within the scope of Mersin- Adana – Gaziantep High Standard Railway Project ESIA (Environmental and Social Impact Assessment) were carried out in January 2022.

During the studies, field survey studies were carried out to determine the tangible and intangible cultural heritage site on the impact corridor and within the borders of the project. As the result of these studies, 71 new archaeological and historical sites have been determined. The impact assessment studies for these areas were completed in compliance with World Bank- International Finance Corporation (IFC) standards, and all the data obtained were officially submitted to the relevant Cultural Asset Protection Regional Boards of the Ministry of Culture and Tourism of Turkey.



3.63 ANKARA AKYURT VACCINE PRODUCTION CENTRE, EXPERIMENTAL ANIMAL PRODUCTION CENTRE AND ABSL3 LEVEL LABORATORY PROJECT

The studies carried out within the scope of 3.63 Ankara Akyurt Vaccine Production Centre, Experimental Animal Production Centre And Absl3 Level Laboratory Project ESIA (Environmental and Social Impact Assessment) were carried out in January – March 2022.

The impact assessment studies for these areas were completed in compliance with World Bank (ESS8) Environmental and Social Standards 8, and all the data obtained were officially submitted to the relevant Cultural Asset Protection Regional Boards of the Ministry of Culture and Tourism of Turkey.



3.64 MERSIN- ÇEŞMELİ- ERDEMLİ- SILIFKE- TAŞUCU MOTORWAY PROJECT (ÇEŞMELİ – KIZKALESİ SECTION)

The studies carried out within the scope of Mersin- Çeşmeli- Erdemli- Silifke- Taşucu Motorway Project ESIA (Environmental and Social Impact Assessment) were carried out in March- May 2022.

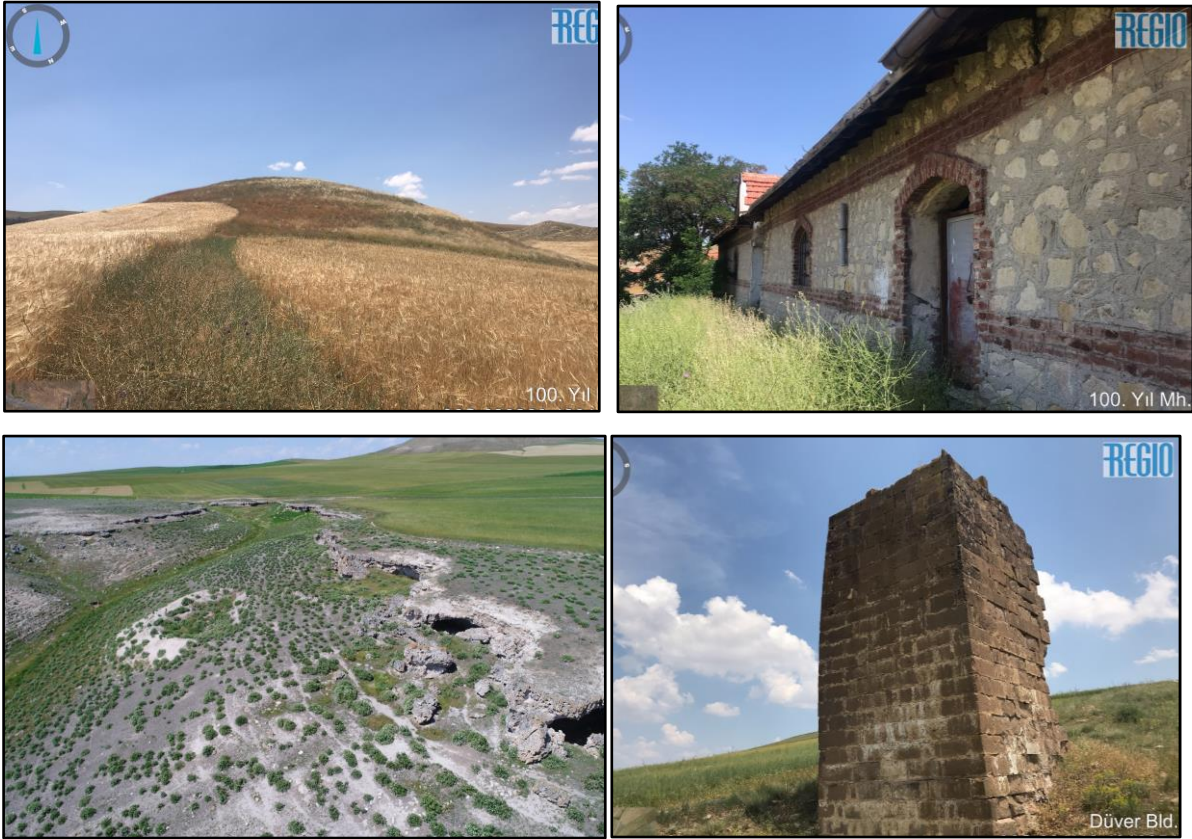
During the studies, field survey studies were carried out to determine the tangible and intangible cultural heritage site on the impact corridor and within the borders of the project. As the result of these studies, 86 new archaeological and historical sites have been determined. The impact assessment studies for these areas were completed in compliance with World Bank- International Finance Corporation (IFC) and European Bank for Reconstruction and Development (EBRD) standards, and all the data obtained were officially submitted to the relevant Cultural Asset Protection Regional Boards of the Ministry of Culture and Tourism of Turkey.



3.65 YERKÖY - KAYSERİ HIGH STANDARD RAILWAY PROJECT

The studies carried out within the scope of Yerköy - Kayseri High Standard Railway Project ESIA (Environmental and Social Impact Assessment) were carried out in June- August 2022.

During the studies, field survey studies were carried out to determine the tangible and intangible cultural heritage site on the impact corridor and within the borders of the project. As the result of these studies, 58 new archaeological and historical sites have been determined. The impact assessment studies for these areas were completed in compliance with World Bank- International Finance Corporation (IFC) and European Bank for Reconstruction and Development (EBRD) standards, and all the data obtained were officially submitted to the relevant Cultural Asset Protection Regional Boards of the Ministry of Culture and Tourism of Turkey.



3.66 TEST PITS AND SALVAGE EXCAVATIONS FOR BANDIRMA - BURSA - YENISEHIR - OSMANELI HIGH STANDARD RAILWAY PROJECT

Test pits and salvage excavation studies were initiated on September 2022 in archaeological areas discovered under ESIA studies of BANDIRMA - BURSA - YENISEHIR - OSMANELI HIGH STANDARD RAILWAY PROJECT, remained within the construction corridor and not be avoided by route change. Excavation studies are conducting in Bursa and Bilecik province as test pit and salvage excavations.

The studies are conducting in 2 different archaeological locations under the supervision of relevant Museum Directorates with qualified experts and technical assistance provided by REGIO.

International best practices were followed in all test pit and salvage sites and the studies were conducted in line with local regulations and international standards. Technical reports prepared by REGIO were approved by relevant Protection Boards were approved and formal decisions were taken for the construction of the project as it was planned in these locations.



3.67 ÇANDARLI WIND POWER PLANT PROJECT

In the project location in Çandarlı Quarter of Dikili District of İzmir Province, site survey for cultural and archaeological assets were completed in November 2022 prior to construction activities. Detailed reports for the studies were handed over to ÇANDARLI RES ELEKTRİK ÜRETİM A.Ş.



4 TRAININGS:

The European Bank for Reconstruction and Development (EBRD) "Social Risk Management and Social Performance Requirements, Performance Requirements 8: Cultural Heritage" training was held at Boğaziçi University on October 21, 2019 by REGIO Cultural Heritage Management Consultancy, attended by representatives from leading construction companies carrying out mass housing, mining, highway, rail, metro, pipeline, dam, wind and solar energy facilities and similar projects from Turkey and Georgia. During the training, comprehensive information to participants regarding requirements and basic principles about cultural heritage for EBRD funding, processes related to cultural heritage preservation and EBRD Performance Requirement 8: Cultural Heritage were delivered.

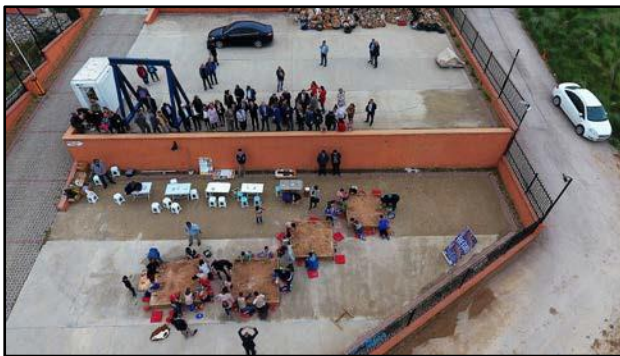


5 ARCHAEOLOGY POOL PROJECT

The “Archaeology Pool Project” which was intended for education and awareness raising among children about the importance of preservation of archaeological and cultural heritage is REGIO’s most important educational and capacity development project. Believing that education has a vital role in the development of a society, REGIO developed the archaeology pool concept for orienting 5-13year olds to the discipline of archaeology and to inform them about the importance of preservation of cultural heritage. Archaeology pool simulates archaeological excavations and children discover and dig out the replicas of archaeological objects under the supervision of professional archaeologists. While they enjoy making discoveries, they learn about the archaeological objects and the history of Anatolia. Workshops and displays located around the pool provide information about the discipline of archaeology and protection of archaeological heritage. The information provided targets children as well as their parents.



The project was implemented in Antares Shopping Mall in Ankara between 26th and 30th January 2013 and in Bandırma Archaeology Museum between 28th April 2017 and 26th May 2017 where a total of 425 children at the age of 5-13 participated in the excavation simulations. 1185 persons including the parents were reached and an important achievement has been made towards introducing importance of archaeological and cultural heritage to participants and increasing awareness.



6 INTERNATIONAL MEETINGS/FAIRS AND PROCEEDINGS

- REGIO, the pioneering private company in Cultural Heritage Management Consultancy area participated in 17th Annual Meeting of the European Association of Archaeologists, organized in Oslo between 14th and 18th September 2011 and 18th Annual Meeting of the European Association of Archaeologists which was held in Helsinki between 28th August and 2nd September 2012 and shared information and experience on the conservation of the cultural heritage in infrastructure construction projects in Turkey and REGIO's activities with international institutions and academic circles.

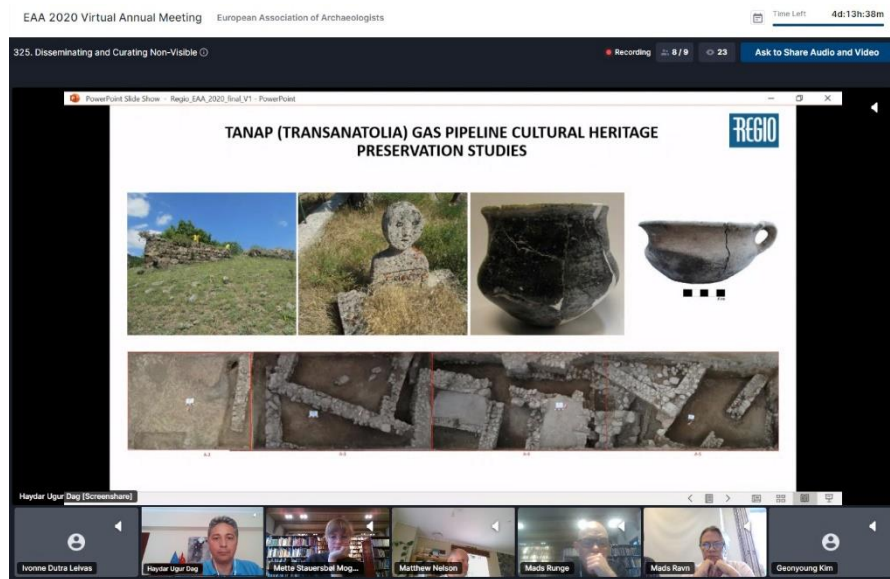


- REGIO participated in the Europa Nostra 2017 Congress which was held between 11th and 15th May 2017 in Turku, Finland. During the congress REGIO had a chance to inform all relevant stakeholders about its studies and had an opportunity to discuss future cooperation possibilities.

- The presentation titled "Protection of Archaeological Heritage in the Construction-Based Development Model" has presented to academics, students and other participants on April 15, 2019, at Eskisehir Anadolu University in Prof. Dr. Taciser Tüfekçi Sivas Conference Hall.



- REGIO, a pioneer in cultural heritage management consultancy in Turkey, participated in the Online Meeting of the European Association of Archaeologists on August 26, 2020 and made a presentation to international institutions, organizations and academicians regarding the protection of archaeological and cultural heritage, especially during construction projects, and other studies carried out by REGIO in Turkey.





Mail: info@regio.com.tr



Linkedin: REGIO Kltrel Miras Ynetim Danıřmanlıęı



Twitter: REGIOarkeoloji



Facebook: REGIO-Kltrel Miras Ynetim Danıřmanlıęı



Instagram: regiokulturelmiras



Youtube: Regio Archaeology Team

www.regio.com.tr

Gzeltepe Mah. Fuar Cad. Fikret Eren Apt. No: 9/16 06690 ankaya/ANKARA

Tel: +90 (312) 440 03 47 Fax: +90(312) 438 77 92

